

**AIRMED**

**SUPPLY SYSTEM  
FOR MEDICAL AIR**



# Features and Operation

Uses a process of compressing and filtering ambient air, including a compressor, coalescing filter, dryer, filtration chain, and sterile filter

Automatic operation without the need for constant operator presence

Compact size and easy to transport/install

Can be associated with other sources of medical air

① AMBIENT AIR

③ FILTRATION CHAIN

② COMPRESSOR

④ DRYER

⑦ MEDICAL AIR IS INTRODUCED INTO THE GAS LINE

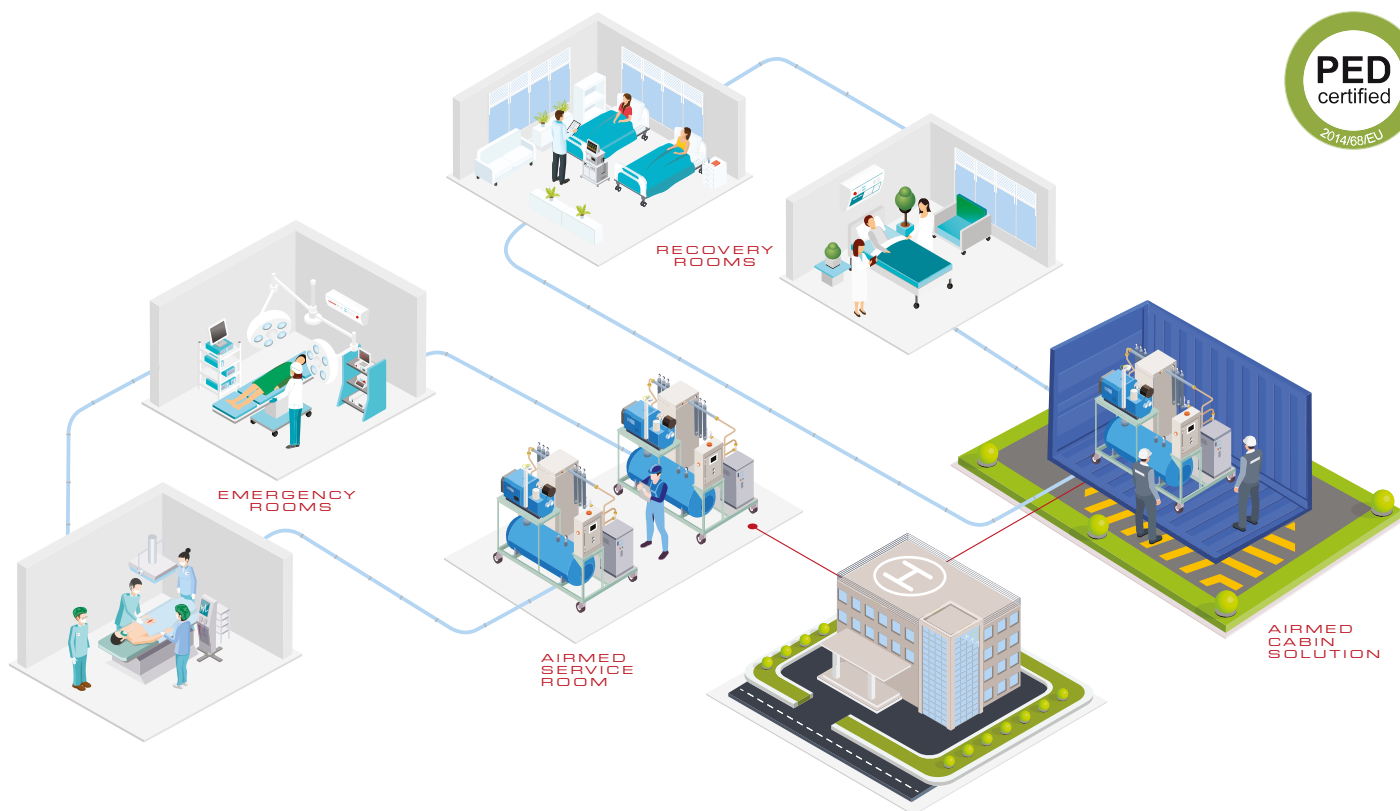
⑥ TANK

⑤ CONTROL PANEL

## Certifications and safety

- 🔩 Certified as a Class IIb Medical Device according to EU Regulation 2017/745 (MDR)
- 🔩 PED certified according to the European Union Directive 2014/68/EU
- 🔩 Compliance with the European Pharmacopoeia, ensuring purity and precision according to rigorous standards

 **Certificate**  
n. 156/MDR



# MODELS AND TECHNICAL DATA

**AIRMED 25**  
(without dryer)

Available in a transportable, insulated and air-conditioned cabin version for outdoor installations

**AIRMED 55**

**AIRMED 115**

	<b>AIRMED 25</b>	<b>AIRMED 55</b>	<b>AIRMED 115</b>
<b>Electrical Supply Voltage</b>	400 Volt – 50 Hz (three-phase/neutral/ground)	400 Volt – 50 Hz (three-phase/neutral/ground)	400 Volt – 50 Hz (three-phase/neutral/ground)
<b>Maximum Power Consumption (kW)</b>	5,5	9	16,5
<b>Maximum Acoustic Pressure Level (dB)</b>	67	67	73
<b>Operating Temperature (°C)</b>	from +5 to +30°C	from +5 to +30°C	from +5 to +30°C
<b>Maximum Operating Altitude (m)</b>	2000	2000	2000
<b>Produced Air Flow Rate (m3/h)</b>	32,7	63,6	134,4
<b>Delivered Air Flow Rate (m3/h)</b>	27	53	112
<b>Tank Capacity (l)</b>	500	500	500
<b>Delivery Pressure</b>	10 bar	10 bar	10 bar
<b>Dimensions (LXWXH)</b>	2055×800xh.1760	2055×1200xh.1600	2200×1200xh.1870
<b>Weight</b>	600 kg	700 kg	950 kg

# Control and management



Managed via control panel and PLC



Automatic control of process parameters



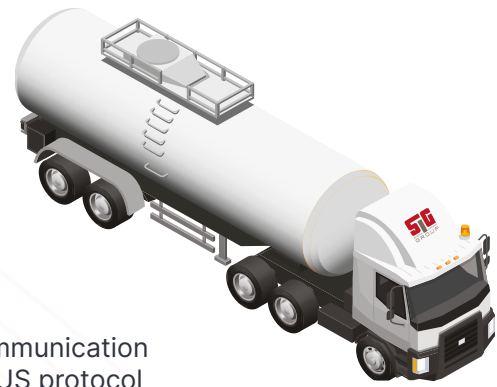
Energy saving in standby mode



Alarm notifications via SMS (optional)



Remote communication with MODBUS protocol



## Why choose Airmed?



Low operating costs



Optimized consumption and noise levels



It does not require constant consumption



Compared to compressed air cylinders: eliminates the dangers associated with the management of cylinders, such as moving and storing pressurized containers



Compared to centralized systems: by maximizing reliability through self diagnosis and simplified maintenance capabilities, it reduces service interruptions, providing a more efficient and autonomous solution



Compared to complete outsourcing: does not depend on external services, offering total control over air quality, reducing operating costs thanks to the internal management of the air purification and supply process

## Additional details

Equipped with water and oil separator for the treatment of condensates and waste

Includes a gas analysis panel with a CO sensor for air quality testing

Smoke detector to prevent possible fire hazards



### CONTACTS



[www.sigsrl.eu](http://www.sigsrl.eu)

035 0433326

[info@sigsrl.eu](mailto:info@sigsrl.eu)

VAT 02091150165

Via Papa Giovanni XXIII  
16 - 24030 Solza (BG)

### CERTIFICATIONS



ISO 9001:2015

ISO 13485:2016